



DREAM
HOMES

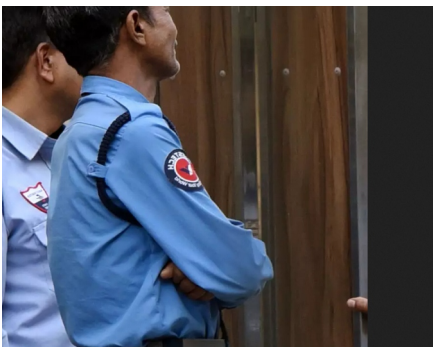


A SMART AMENITIES FOR LIVING SMARTLY

We cannot imagine modern life without smart devices and related accessories. Imagine a life where these smart devices simplify your living too. Where we choose Smart devices for better experience then why not DREAM HOMES for better lifestyle.



AMENITIES
& SERVICES



LANDSCAPED
GARDEN



GATED COMMUNITY
WITH 24 HR. SECURITY



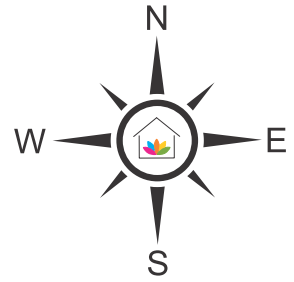
24 HOURS
WATER SUPPLY



UNDERGROUND
SEWERAGE



ELECTRIFICATION



- PLOT
- ROW HOUSES

KEY LOCATION



City Centre
2.0 Kms.



Schools
1.0 Km.



Hospital
1.5 Kms



Banks/ATM
1.0 Km.



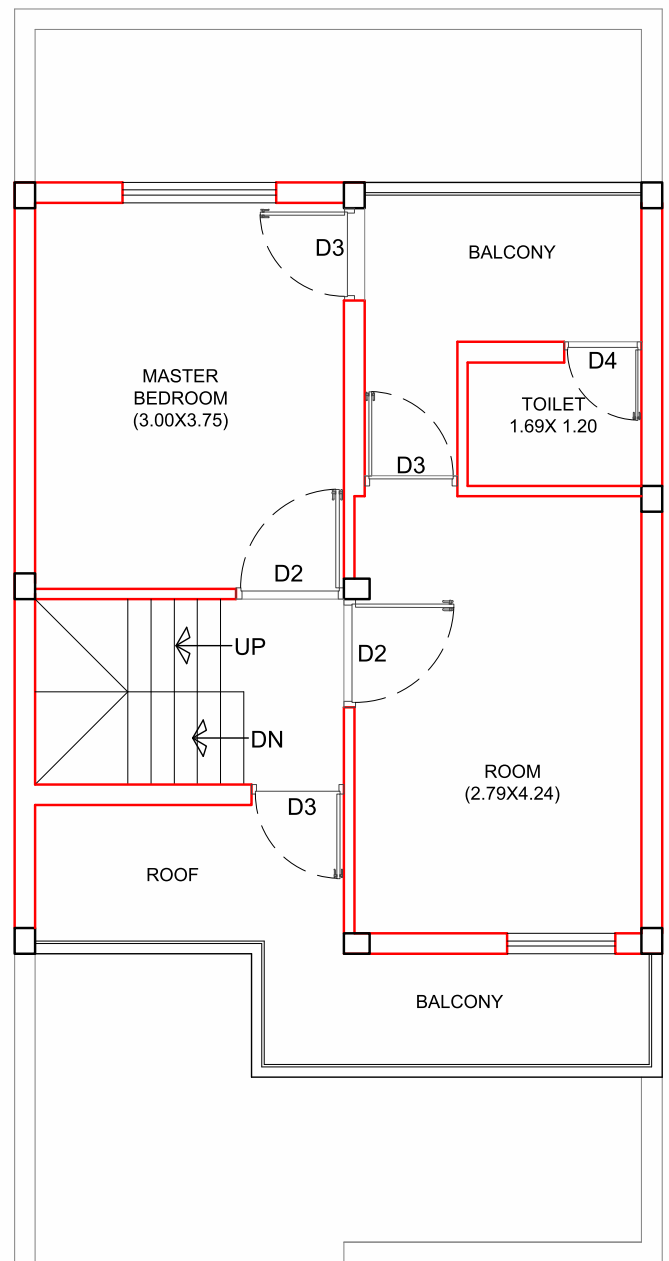
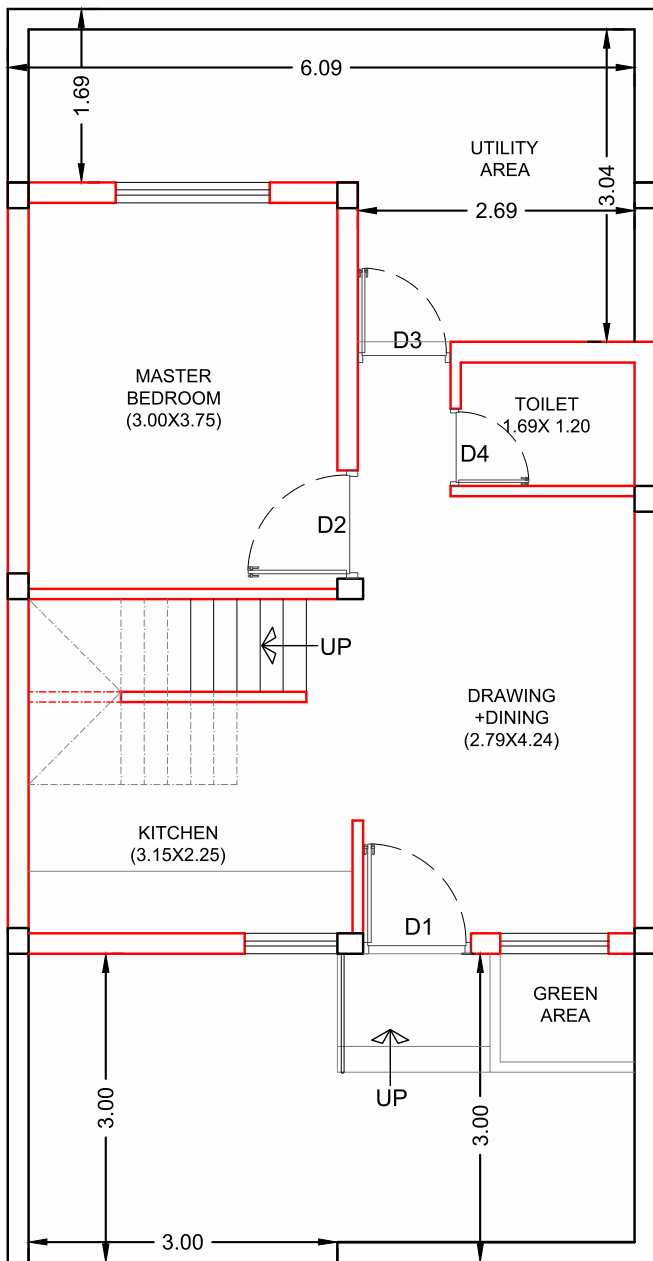
Railway Station
3.5 Kms



Bus Stand
2.1 Kms

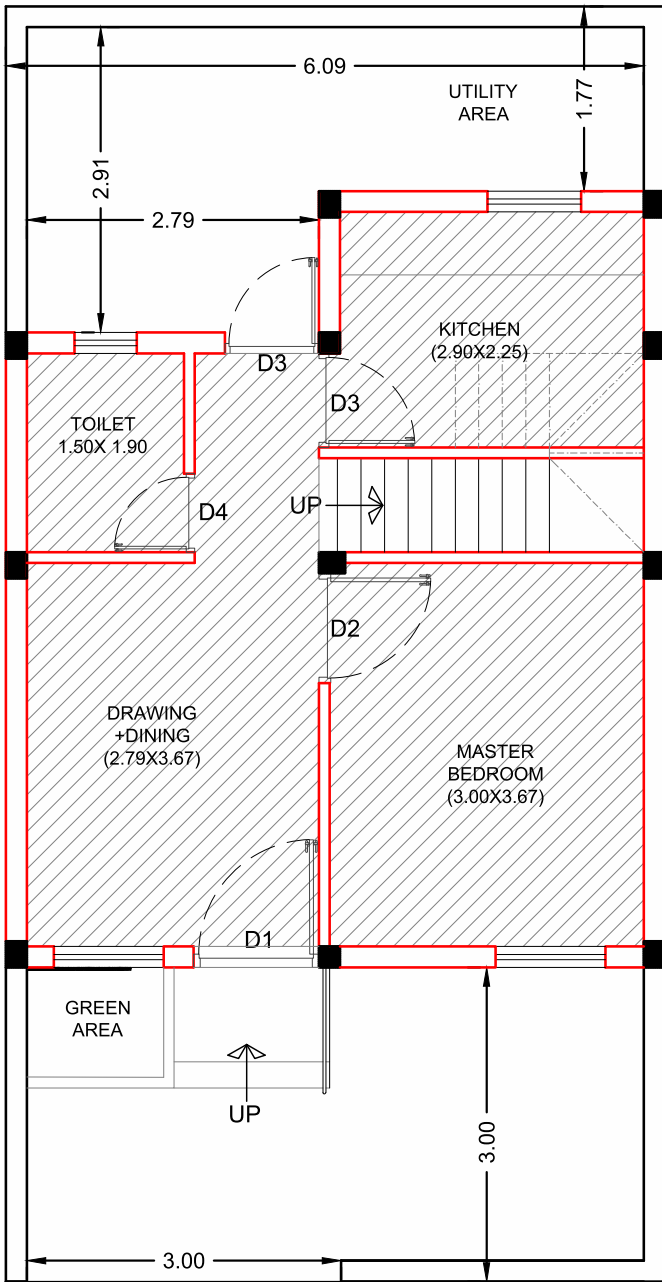
A SMART LAYOUT AND INFRASTRUCTURE.

Smart Layout & infrastructure provides better living space, this feature ensures that the dream you see for better living, never breakdown, Dream Homes allows for living space to create a clear and easy to lifestyle.

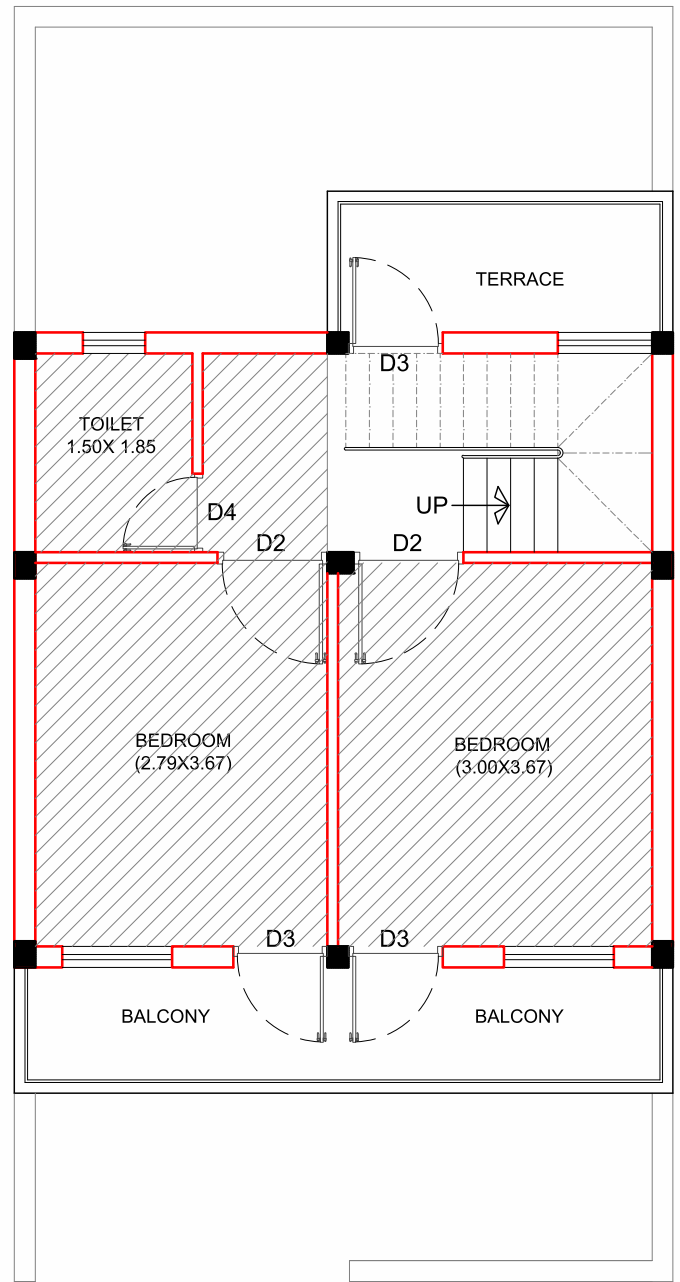


EAST FACING

WEST FACING



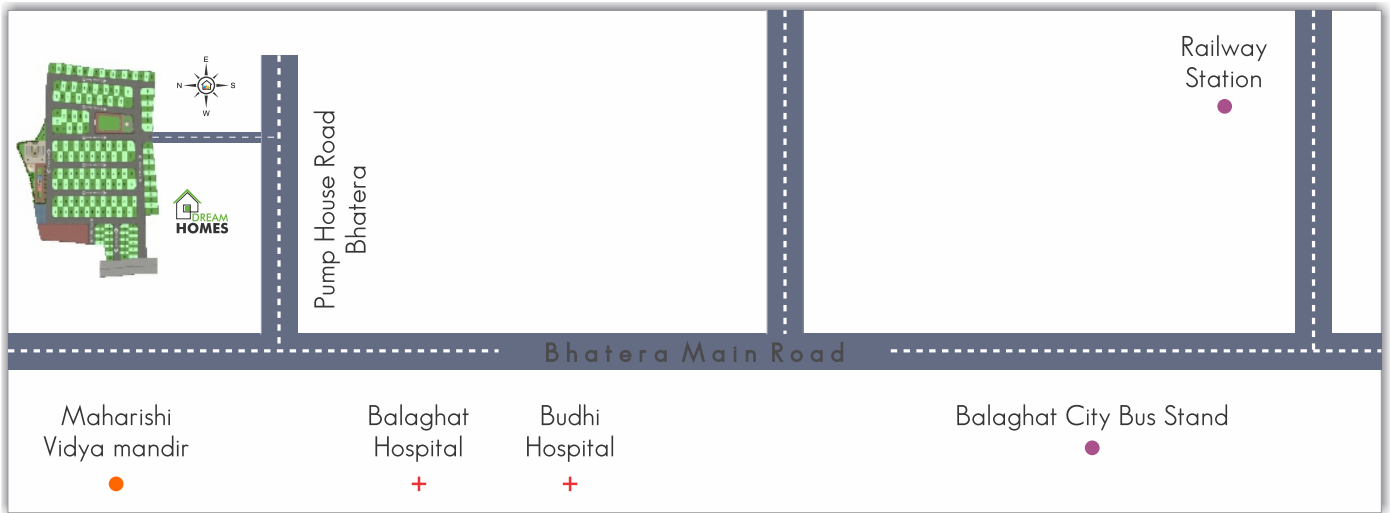
Ground Floor



First Floor

Dream Homes provides extraordinary experience with Smart life, including Modern amenities, Better connectivity, Smart space, Smart lifestyle, As long as you live with your family, you'll be able to build smart future through DREAM HOMES.

Location Map



Site : Pump House Road, Bhatara, Balaghat (M.P.)

An Initiative By

C O R D
VENTURES

CORPORATE OFFICE

SF-23, Shyam Plaza, Opp. Bus Stand, Pandri,
Raipur (C.G.) Tel : 0771-4072140

CITY OFFICE

1st Floor, Above Sancheti Finance, Gondia Road, Hanuman Chowk,
Balaghat (M.P.) Tel : 07632 - 243777

SITE ADDRESS

Pump House Gali, Bhatara- Balaghat (M.P.)

CONTACT FOR BOOKING

+ 91 99261 59666

+91 74705 06221



www.cordentures.com



info@cordventures.com



Like Us :



www.facebook.com/DreamHomeBalaghat/